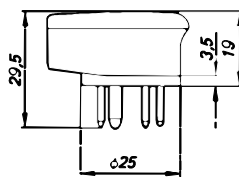
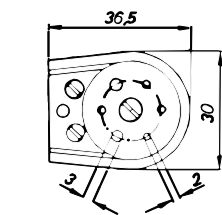
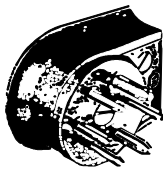
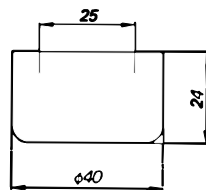
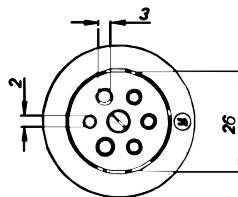
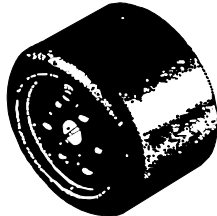


**doppelspurige Strecke Spur H0 und Spur H0m**

MES 60 BZ

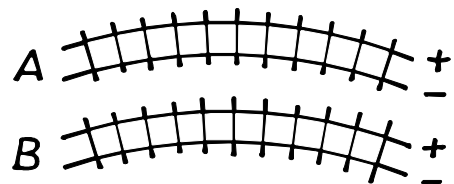


MED 60



6-polige Steckverbindung  
Typ Hirschmann

**(nicht mehr erhältlich!)**



Pos. 1	weiss	Fahrstrom A +
Pos. 2	braun	Fahrstrom A -
Pos. 3	grün	Fahrstrom B +
Pos. 4	gelb	Fahrstrom B -
Pos. 5	grau	Wechselstrom Phase
Pos. 6	violett	Wechselstrom Nullleiter

A = äusseres  
Gleis

B = inneres  
Gleis

Jedes doppelspurige Modul benötigt einen Polwendeswitcher 4xUM.  
Die Verdrahtung erfolgt gemäss Skizze.

